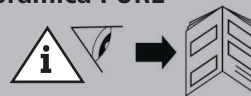




Schnellübersicht PURE · Quick overview PURE · Aperçu rapide PURE · Rapida panoramica PURE · Sneloverzicht PURE

Fig. 689 03 005 | 689 03 006



K410068903002-00



Legende · Key · Légende · Legenda · Legenda

	DE	EN	FR	IT	NL
	Intervallzeiten	Interval times	Intervalles	Tempi intervallo	Intervaltijden
	Spüldauer	Flushing duration	Durée de rinçage	Durata risciacquo	Spoelduur
	Akustisches Signal Fehler	Acoustic signal error	Signal sonore erreur	Segnale acustico di errore	Akoestisch signaal storing
	Ventilauswahl: V1; V2 oder V1 & V2	Valve selection: V1; V2 or V1 & V2	Choix de l'électrovanne: V1; V2 ou V1 & V2	Selezione valvole: V1; V2 oppure V1 e V2	Selectie afsluiter: V1; V2 of V1 & V2
	In Funktion	In function	Fonctionne	In funzione	In werking
	Auswahl Wasserwechselgruppen	Water exchange group selection	Sélection des groupes de changement d'eau	Selezione gruppi scambio acqua	Selectie spoelgroepen
	Spülung aktiv	Flushing active	Rinçage activé	Risciacquo in corso	Spoeling actief
	Fehler	Error	Erreur	Errore	Storing
	Intervallzeit in h + Spüldauer in min	Interval time in h + flush duration in min	Intervalle en h + durée de rinçage en min	Tempo intervallo in h + durata risciacquo in min	Intervaltijd in uur + spoelduur in min.
	Auswahl	Selection	Sélection	Selezione	Selectie
	Blinkend: Auswahl bestätigt → automatische Bestätigung nach 30 Sek.	Flashing: Selection confirmed → automatic confirmation after 30 sec	Clignotement: sélection confirmée → confirmation automatique au bout de 30 secondes	Se lampeggia: selezione confermata → conferma automatica dopo 30 sec.	Knipperend: selectie bevestigd → automatische bevestiging na 30 sec.

→ = **quittiert | acknowledged
confirmation | silenziato |
bevestigd**

→ →

1

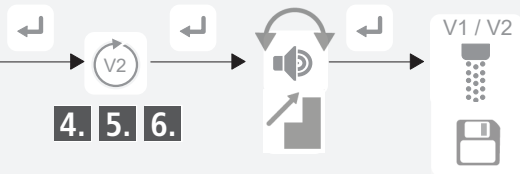
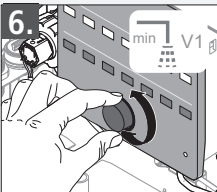
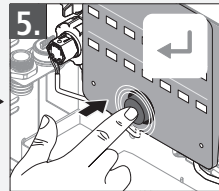
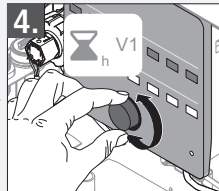
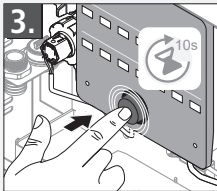
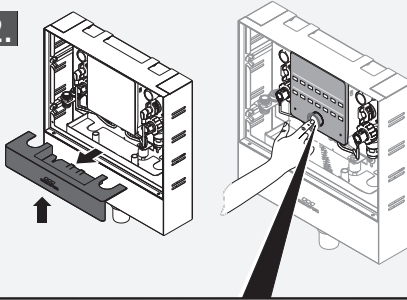
Inbetriebnahme · Commissioning · Mise en service · Messa in funzione · Inbedrijfstelling

1.

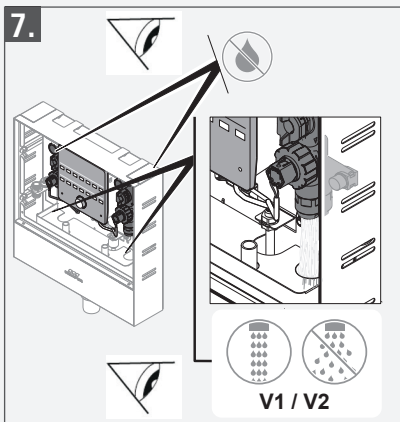


- Legende
- Key
- Légende
- Legenda
- Legenda

2.



7.



2

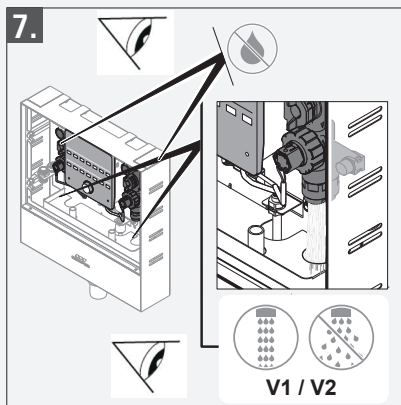
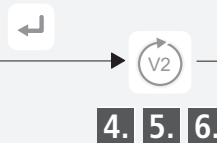
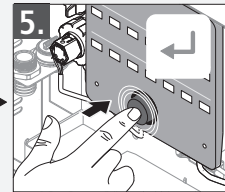
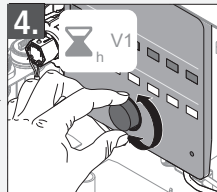
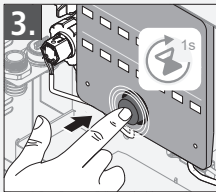
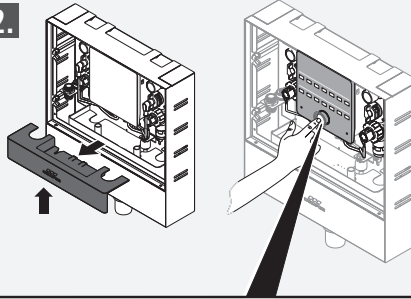
Betriebsart einstellen · Setting operating mode · Réglage du mode de fonctionnement · Impostazione della modalità operativa · Bedrijfsmodus instellen

1.



- Legende
- Key
- Légende
- Legenda
- Legenda

2.



3

Handspülung · Manual flushing · Rinçage manuel · Risciacquo manuale · Handmatige spoeling

