

EN Installation and Operating Manual
FROSTI® | Fig. 579 11



Installation and operation

Read the manual and follow the instructions before installation. Installation and maintenance must be carried out by qualified plumbers.

Keep the manual for future reference!

Hand over the installation instructions to the client.

The place of installation may not be at risk of flooding. The valve seat must be located in the frost free area.

Do not combine components of Figure 579 with parts from earlier versions.

Perform a leak test after installation and before commissioning!

Priority must be given to the national standards and provisions on sanitary installations and accident prevention.

All dimension specifications are given in mm.

Warranty

Warranty or liability are voided through:

- Disregard of installation instructions.
- Damage due to faulty installation.
- Unauthorised product modifications.
- Other incorrect operation.

Use

The KEMPER FROSTI® is used as a frost-proof outdoor tap.
Do not use the product for other purposes than described above.
Any other uses constitute misuse.

Warnings

Be sure to read and follow the warnings in the manual. Failing to do so can lead to personal injury or material damage!

Important warnings:



Warning! Highlights risks that may result in injury, material damage or contamination of drinking water.



Note! Highlights risks that may result in damage to the plant or dysfunction.



YouTube



Important advice to the operator

Medium: water
maximum operating temperature 65 °C,
pressure rating PN 16

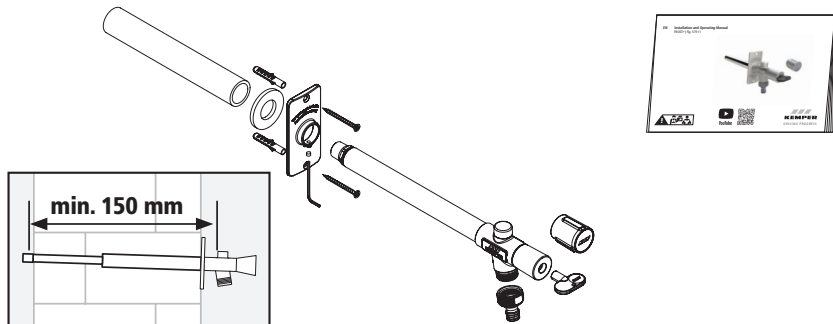
1. The tap should only be used
 - in good order and condition.
 - as intended.
2. **The tap seat must be located in the frost free area.**

Maintenance

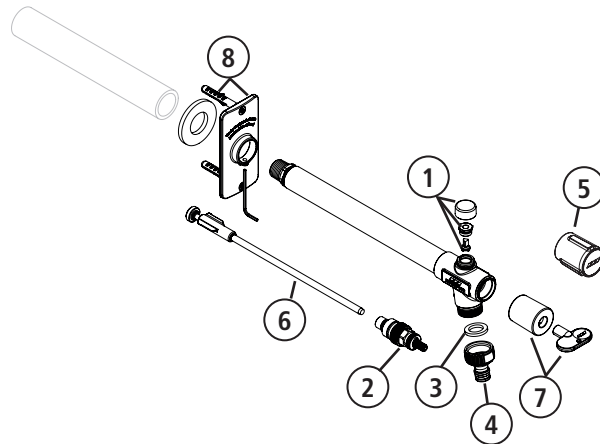
In accordance with BS EN 806-5, maintenance is to be carried out on the tap annually.

Be sure to comply with the local regulations on waste recycling and disposal.

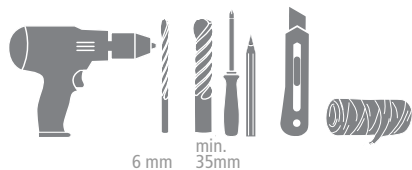




WRAS



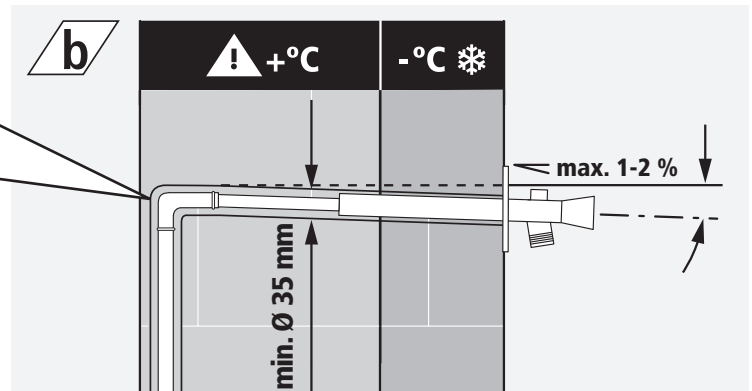
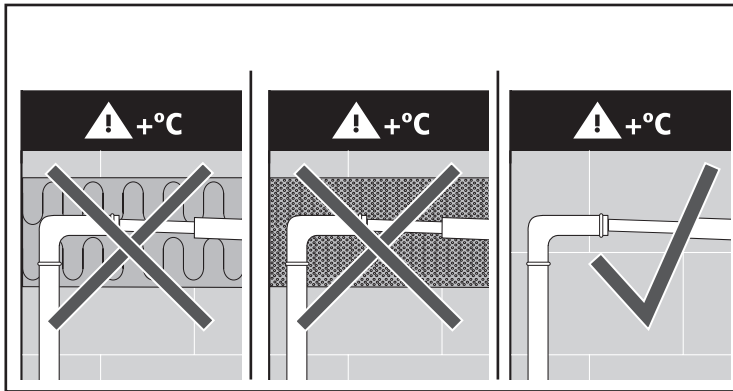
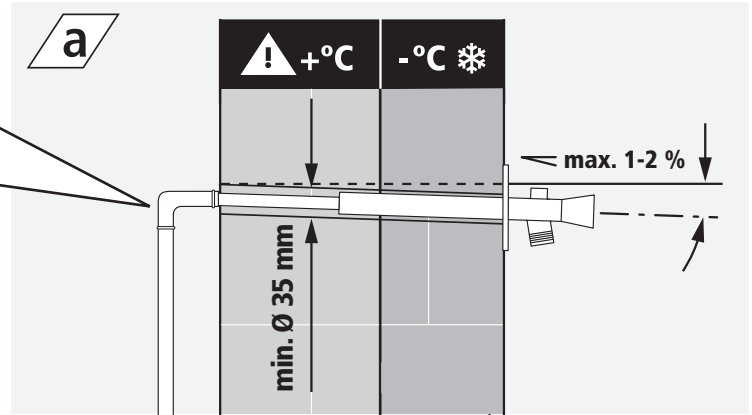
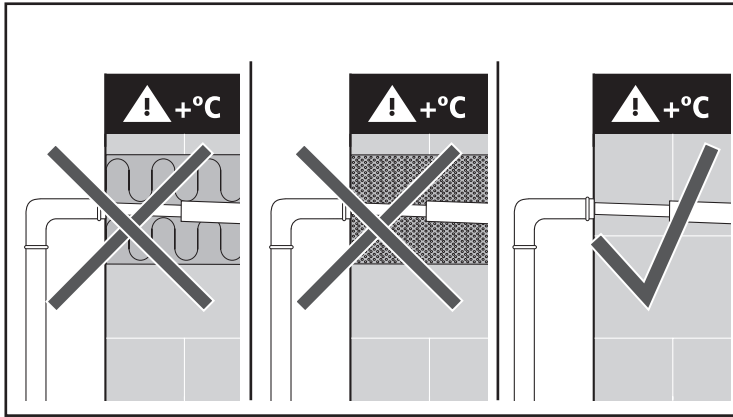
BS EN 1717
BS EN 806

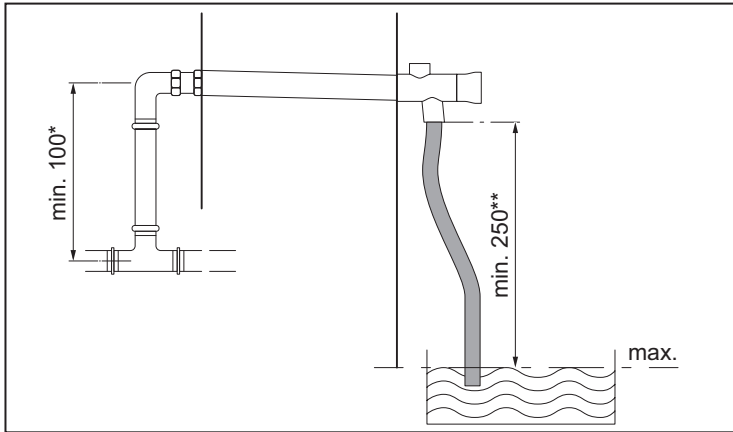


6 mm
min.
35mm

Pos.	Art.-No.
1	5782300100
2	5783500100
3	5782700100
4	5782501500
5	5780100100
6	5783400100
7	5780000100
8	5791200100

i





BS EN 1717
BS EN 806

EN Drinking water installation

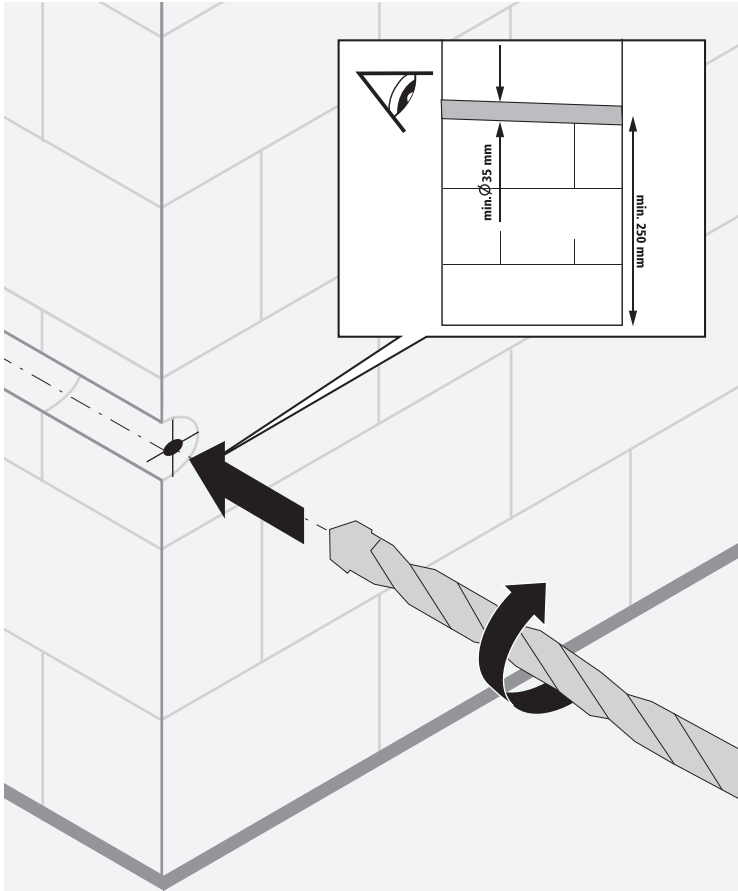
In order to prevent stagnation in the supply pipe, it is recommended to loop the tap in the drinking water system.

- * For technical and hygienic reasons, it is necessary to execute the last min. 100 mm as a functional individual supply line.
- ** The tap must be installed at least 250 mm above the maximum water level.

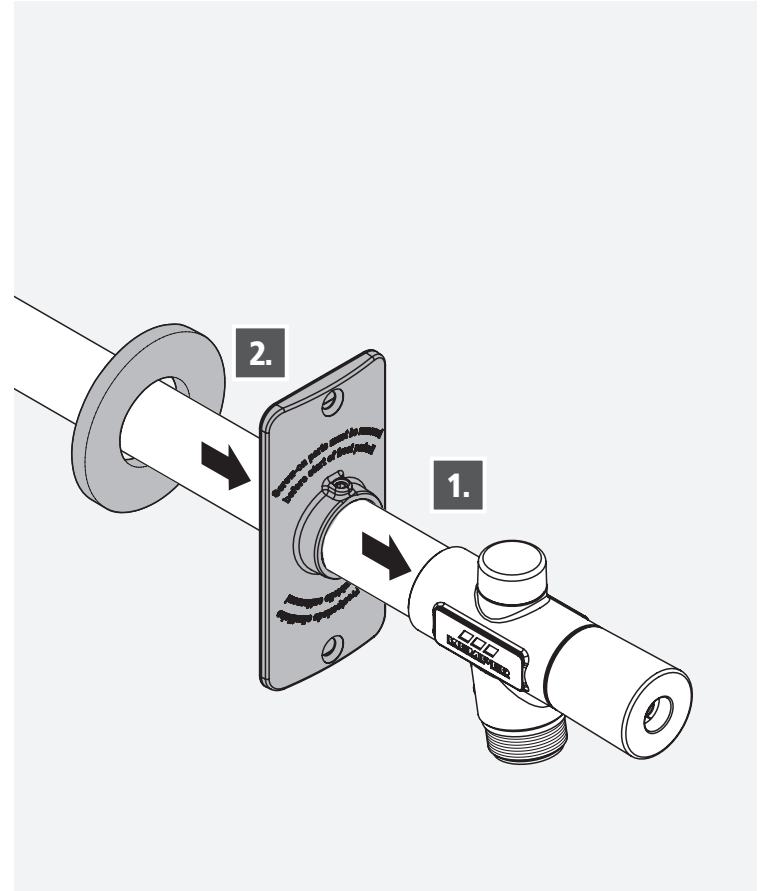


Warning! The FROSTI must be installed in accordance to Water Regulations, schedule 2, paragraph 15. The level of protection must be appropriate to the fluid category.

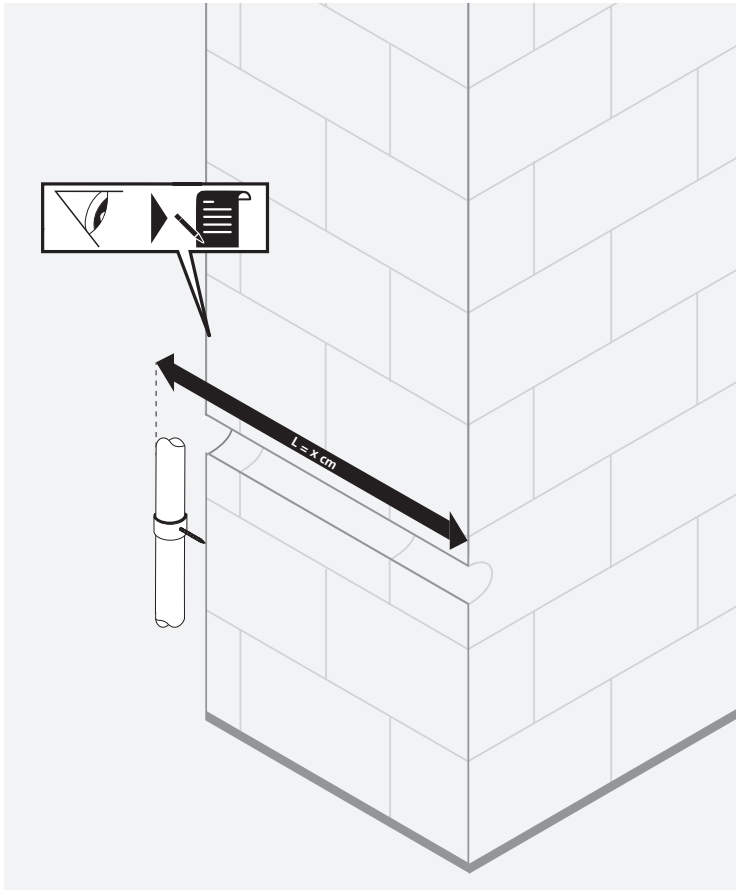
1



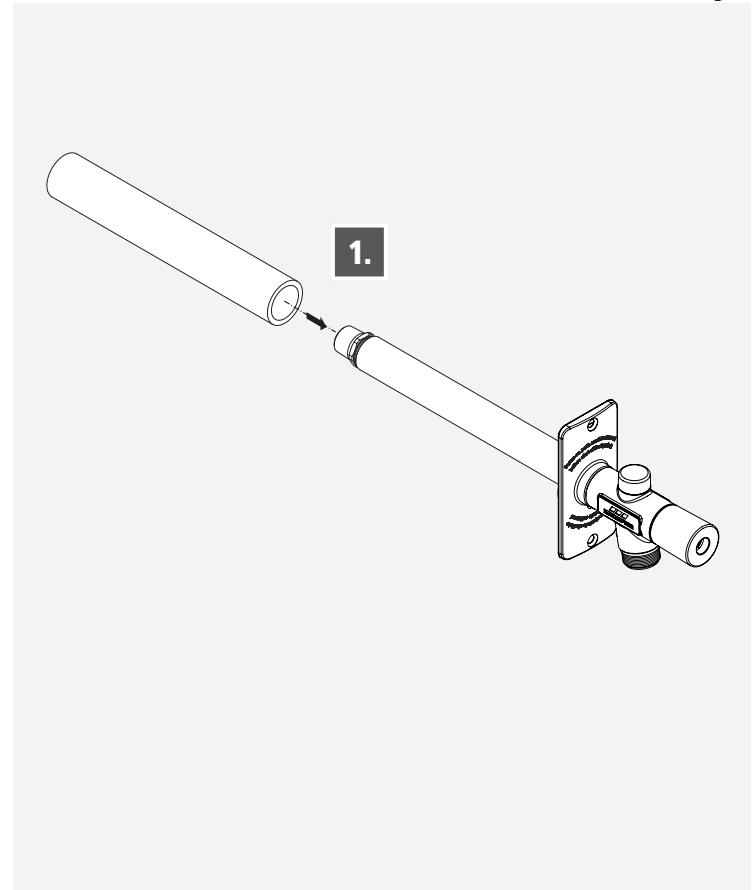
2



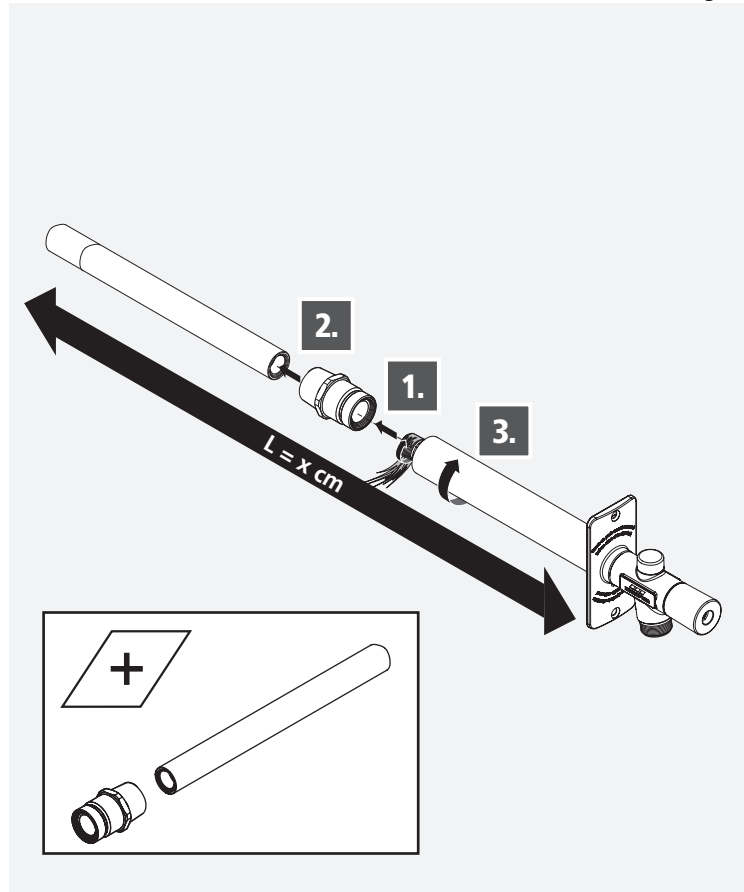
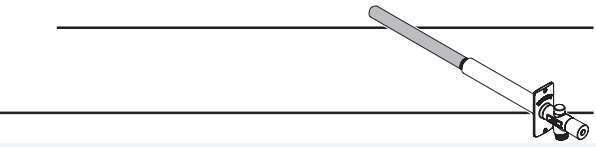
3



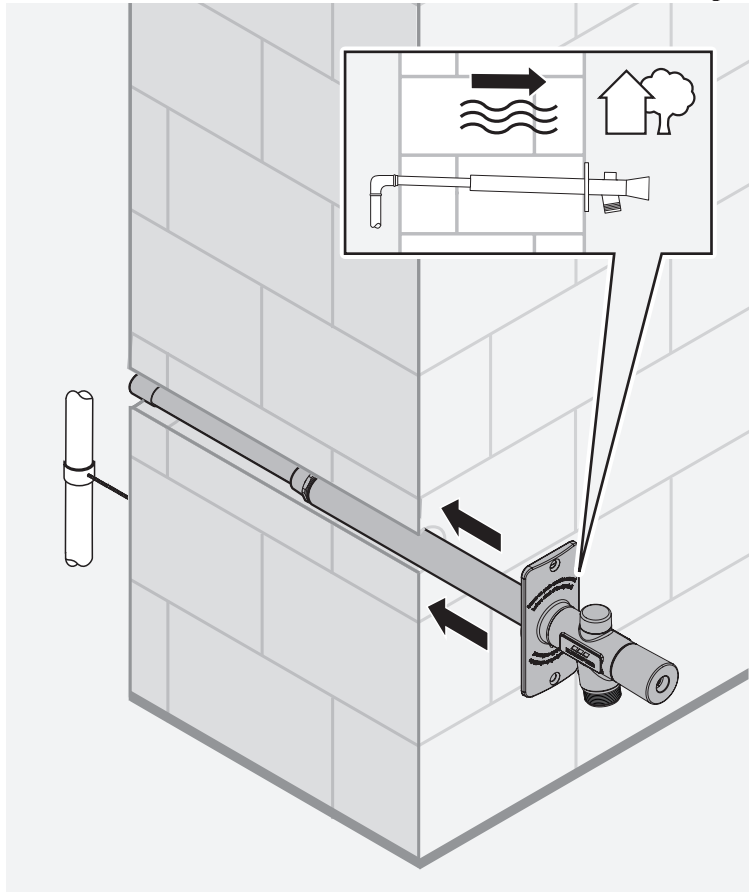
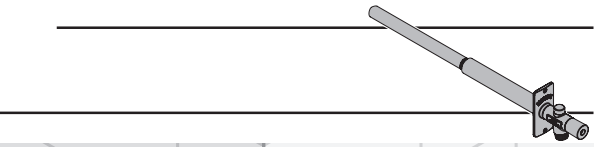
4



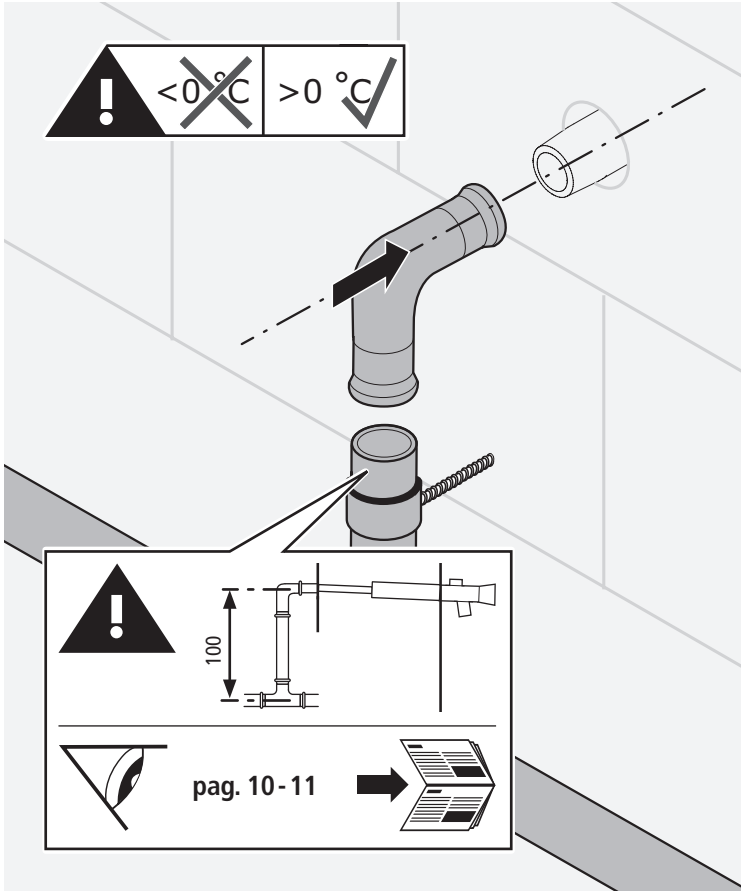
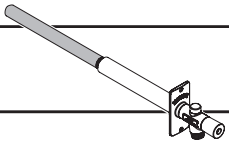
5



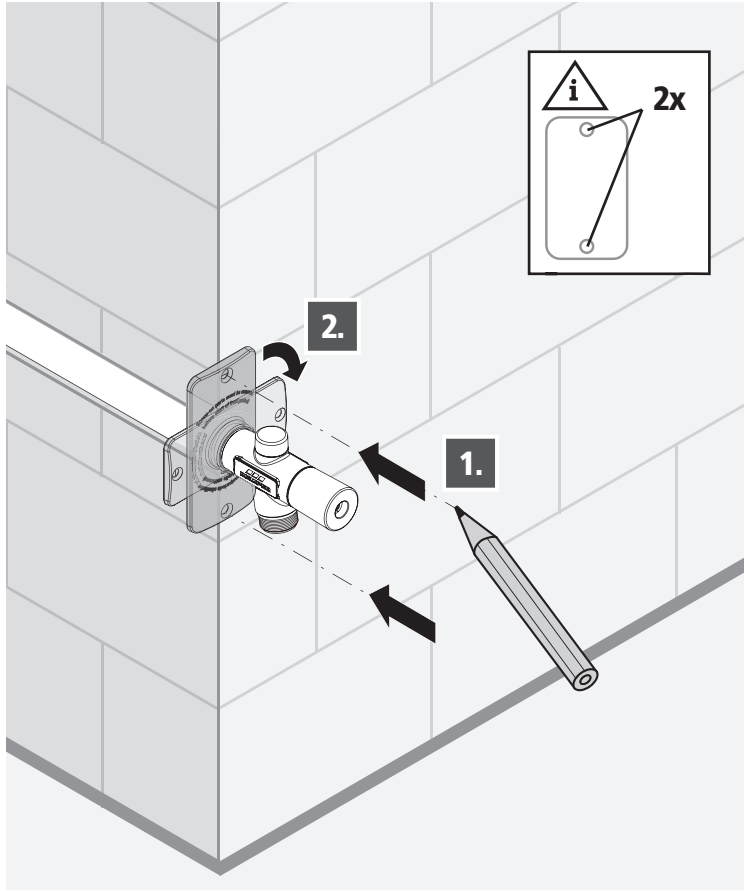
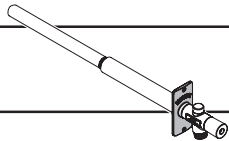
6



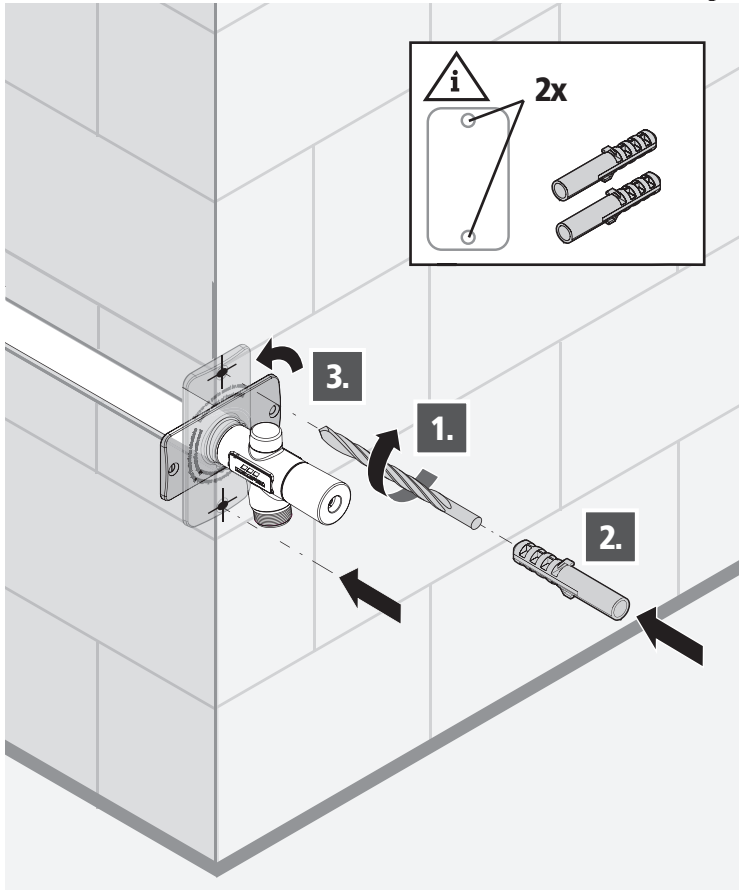
7



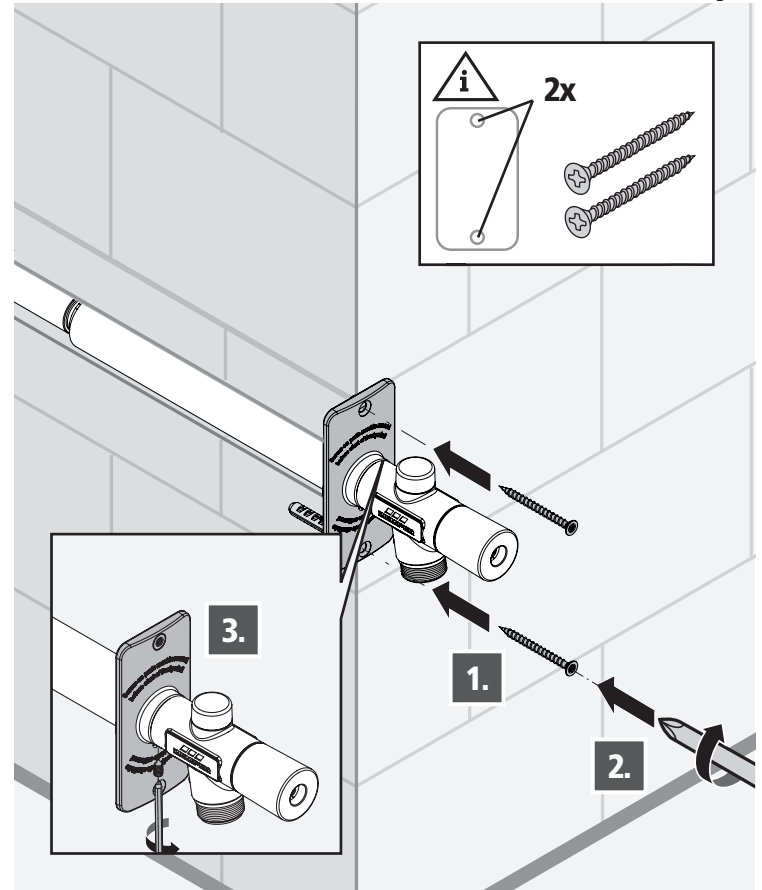
8

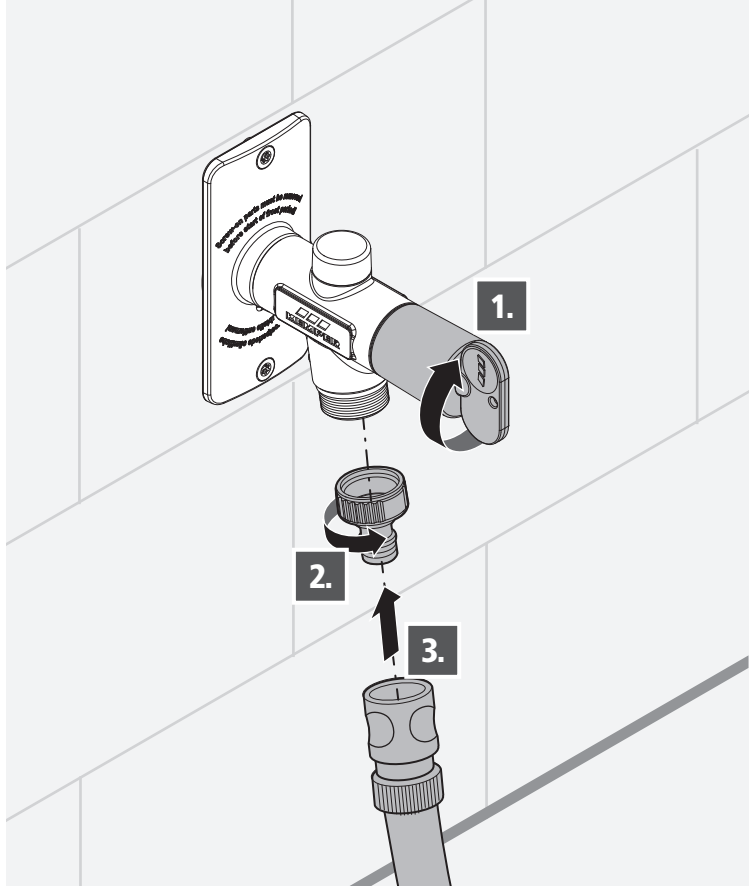
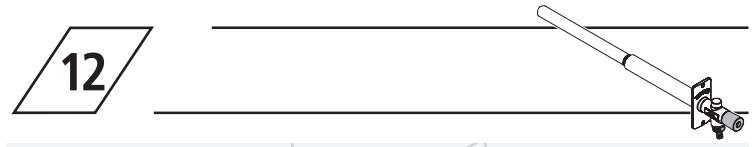
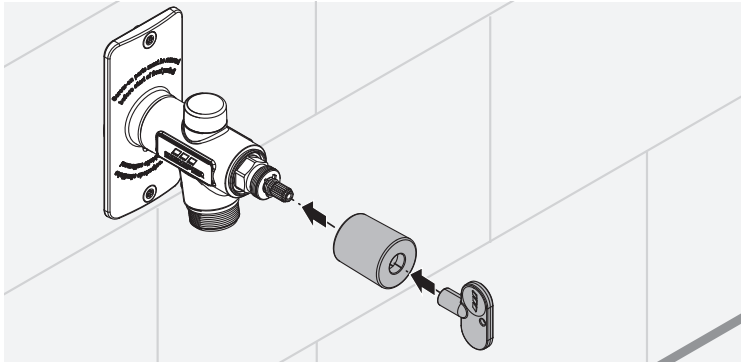
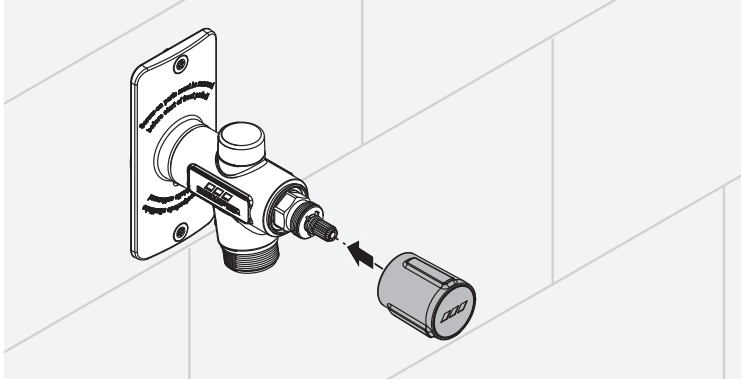
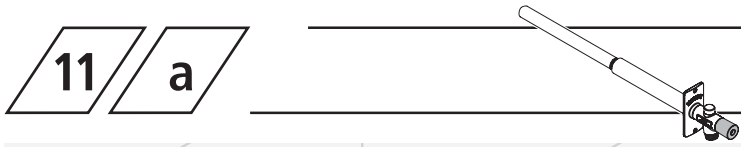


9

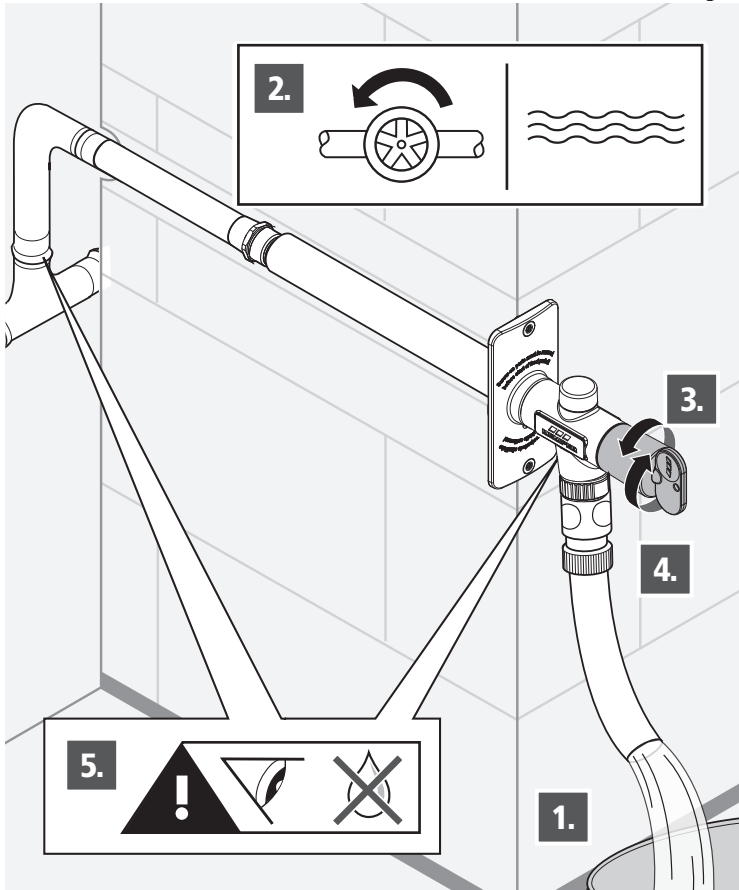
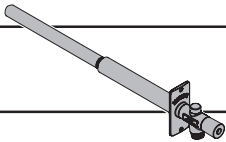


10

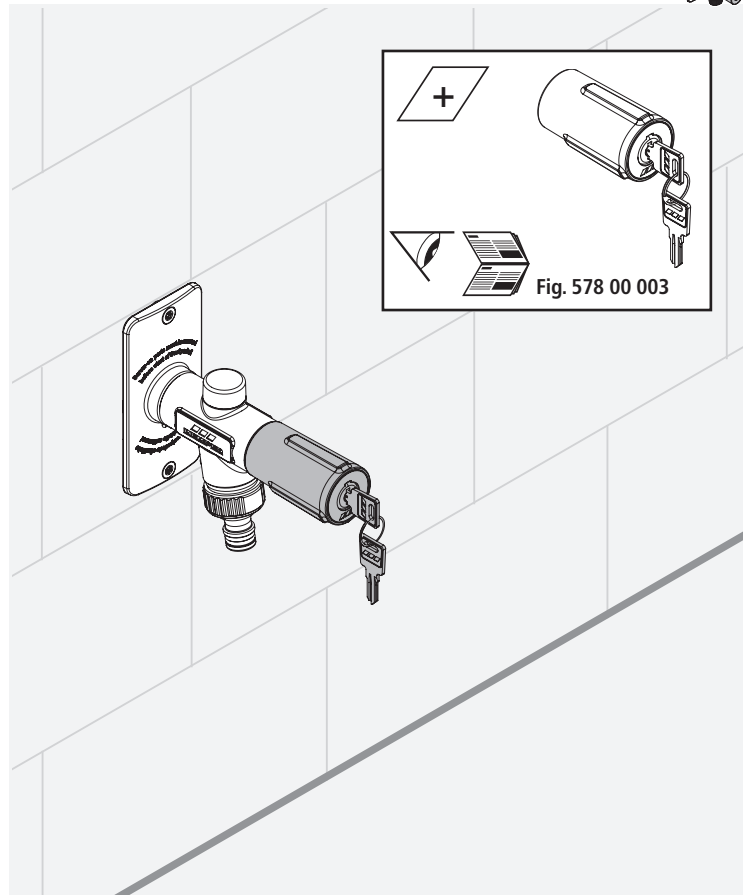
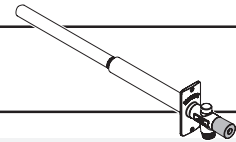




13



+



Kemper UK & Ireland Ltd.
2 Ripple Court Brockeridge Business Park
Twynning / Tewkesbury
Gloucestershire GL20 6FG
Great Britain



Phone +44 16 84 - 85 49 30
Fax +44 16 84 - 85 49 31
www.kemper-uk.com
info@kemper-uk.com