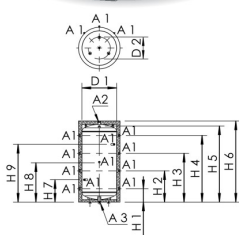




### Product Features

- insertion of three heating elements possible (ports A4)
- insulated buffer tank
- for heating water
- with baffle plate for temperature stratification
- memory features 8 side connections, 1 topside connection and 3 additional connections arranged on the side for using electric heating elements
- female pipe thread
- Maximum possible length of heating cartridges corresponds to installation dimension D1



### Standards and Approvals

- building material class B1 according to DIN 4102

### Technical data

- pressure rating PN 6
- max. operating temperature 95 °C
- thermal conductivity 0.0316 W/mK

Part no.	tilted size (mm)	volume of equipment (l)	A1	A2	D1 (mm)	D2 (mm)	H1 (mm)	H2 (mm)	H3 (mm)	H4 (mm)	H5 (mm)	H6 (mm)	H7 (mm)	H8 (mm)
9650050000	1700	500	Rp 1 1/2	Rp 1 1/4	650	450	277	627	977	1327	1618	1670	452	802
9650100000	2260	1000	Rp 1 1/2	Rp 1 1/2	790	700	301	821	1331	1851	2168	2220	561	1076

Part no.	H9 (mm)	T1 (mm)	energy efficiency class	heat retention losses (W)	kg
9650050000	1152	100	B	75	144,00
9650100000	1591	100	C	110	214,00

### Accessories

- PLUS connecting set for KTS ThermoTank, installation with 3-way directional reversing valve, figure 955 05
- connection kit for KTS ThermoTank, installation without 3-way directional reversing valve, figure 955 06