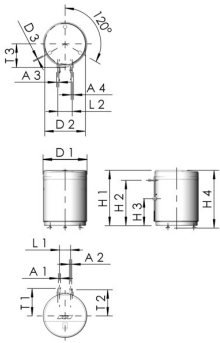




Product Features

- as flow-through drinking water cooler for cooling drinking water with integrated circulation pump
- for cooling and distributing the cold water as far as the tapping point outlet in the drinking water installation
- adjustment range of PWC temperature 15 °C to 25 °C
- consisting of PWM-controlled circulation pump with stainless steel housing and integrated check valve
- consisting of PWM-controlled operating fluid pump
- with diffusion-tight insulation fitted at the factory
- space requirements less than 1 m²
- wetted metal parts made from dezincification-free and corrosion-resistant gunmetal, resistant to aggressive water, stainless steel and drinking water-approved plastics
- low-noise operation
- installation on the ground
- incl. drinking water-side maintenance cut-offs
- built-in operating fluid buffer tank
- allows efficient operation of the cold water generator
- connection to cold water generator hydraulically separated, integration of all cold water generators possible
- compact design
- plate heat exchanger made of stainless steel grade 1.4401/1.4404
- electronic control unit for high control quality during operation
- incl. Pt1000 measuring element
- factory pre-assembled electrical connection of actuators and sensors to the control unit
- Contact for recharging request
- Fault signalling contact
- Data logger and gateway for connection to the building management system
- stores all evaluable parameters and serves as an interface device for the BMS/GA via Modbus TCP/IP
- Data storage on supplied micro SD card
- Readable and writable data points are made available via Ethernet using the Modbus TCP/IP protocol
- Lifetime storage capacity thanks to large 4GB SD card
- LAN RJ45 10/100 MBit/s Ethernet
- maintenance and commissioning of the plant on request, replaces version 610 01 000



Technical data

- pressure stage PN 10 drinking water side and PN 6 equipment side
- min. ambient temperature 0 °C
- max. ambient temperature 50 °C
- max. cooling capacity 6.4 kW
- power supply 230 V AC
- electrical power input 185.5 W

Part no.	max. flow rate of cold water circulation pump (m ³ /h)	max. head of cold water circulation pump (m)	volume of equipment (l)	capacity (KW)	A1	A2	A3	A4	D1 (mm)	D2 (mm)
6100100200	2	10	100	6.4	G 1	G 1	Rp 1	Rp 1	640	590

Part no.	D3 (mm)	H1 (mm)	H2 (mm)	H3 (mm)	H4 (mm)	L1 (mm)	L2 (mm)	T1 (mm)	T2 (mm)	T3 (mm)	Weight (kg)
6100100200	13	805	660	392.5	840	161	210	400	381	345	70.00

Accessories

- KHS CoolFlow Chiller, figure 618 01

Spare parts

- cooling pump for KHS CoolFlow cold water cooler, figure 612 01
- Cold water circulation pump for KHS CoolFlow cold water cooler, figure 612 02 001
- Cold water circulation pump for KHS CoolFlow cold water cooler, figure 612 02 002
- controller for KHS CoolFlow cold water cooler, figure 612 03
- plate heat exchanger for KHS cold water cooler, figure 612 04
- Skymantle wrapping for KHS CoolFlow cold water cooler, figure 612 07
- top cover for KHS CoolFlow cold water cooler, figure 612 08
- Data logger and gateway for KHS Cold Water Cooler, figure 611 00