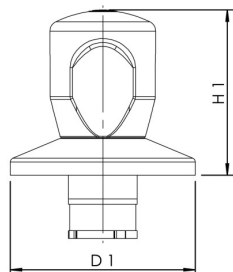




### Product Features

- for UP-PLUS, UP-ETA-THERM, UP quarter turn stop valves and water meter combinations CLASSIC
- chrome-plated collar
- chrome-plated collar
- with fixing set for mounting in plastic shaft of flush-mounted valves
- including red and blue indicator plates to indicate hot or cold water
- for UP quarter turn stop valves, please select DN 25



Part no.	for DN	D1 (mm)	H1 (mm)	inner shaft diameter	thread	Weight (kg)
5900001500	15-20	70	63	26	M 21 x 1,25	0.19
5900002500	25-32	70	63	35	M 33 x 1,5	0.20