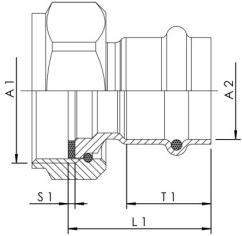


### Product Features

- wetted parts made of stainless steel
- with coupling nut for flat sealing connection thread including EPDM gasket
- press connection Viega SANPRESS INOX
- Screw connection made of brass, nickel plated



### Standards and Approvals

- according to accepted materials list from German environmental agency
- DIN EN 1213
- ÚA-Reg.-Nr. R-15.2.3-21-17049, WIEN-ZERT

Part no.	DN	A1	A2 (mm)	L1 (mm)	S1 (mm)	T1 (mm)	Weight (kg)
4767001500	15	G 3/4	15	34	2	21	0.06
4767001800	15	G 3/4	18	35	2	21.5	0.07
4767002000	20	G 1	22	39	2	24	0.10
4767002500	25	G 1 1/4	28	42	2	24.5	0.15
4767003200	32	G 1 1/2	35	44	2	22.5	0.19
4767004000	40	G 1 3/4	42	58	2	31	0.30
4767005000	50	G 2 3/8	54	64	2	39	0.52

### Spare parts

- box with spare gaskets, figure 476 99 001
- EPDM gasket for union connections, figure C3100 476 07