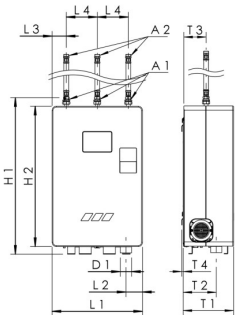




**Product Features**

- cover made of EPP
- Connection to the pipe by enclosed flex pipe (500mm)
- control of external immersion and metering pump possible
- readout of data, for example operating status, possible using USB interface
- operating times can be defined
- easy operation using touch screen
- Connection to power supply with type F safety plug
- Increase in discharge capacity possible through parallel operation
- frost protection monitor
- low-noise operation
- high performance
- plastic drain connection according EN 1717
- wetted parts on the drinking water side made of gunmetal, stainless steel and drinking water approved plastics
- with coupling nut for flat sealing connection thread including EPDM gasket
- Non-drinking water can be integrated (optional)
- View operating and system data conveniently via BMS connection
- normally closed inlet valve
- drain overflow monitoring (optional)
- for the protection of drinking water against non-potable water of fluid category 5 in accordance with DIN EN 1717/DIN 1988-100
- for wall mounting or installation on optional rack
- Energy-efficient and speed-modulating pump
- Flushing the PWC line up to 3 times a day
- Cleaning of the storage container (optional) possible
- Access to digital services as part of the KEMPER PRO functionalities
- maintenance requirements in accordance with DIN EN 806-5 must be complied with
- For more information on parallel operation, please contact your sales representative
- additional country-specific versions on request



**Standards and Approvals**

- DVGW approval
- VA approval
- DIN 3546-1

**Technical data**

- pressure rating PN 10
- max. operating temperature 35 °C
- min. ambient temperature 2 °C
- max. ambient temperature 40 °C
- protection class IPX4
- power supply 230 V AC
- volume of receiver tank 30 l
- Flushing volume of PWC line 10 l/min (at 3 bar)
- power factor 0.98

Part no.	DN	max. head (m)	max. flow rate (m <sup>3</sup> /h)	A1	A2	D1 (mm)	H1 (mm)	H2 (mm)	L1 (mm)	L2 (mm)	L3 (mm)	L4 (mm)	T1 (mm)	T2 (mm)	T3 (mm)	T4 (mm)
3693102500	25	44	6	G 1 1/4	G 1	75	1038	930	600	110	94	206	330	215	147.6	9.5

Part no.	minimum flow pressure (MPa)	nominal connection diameter, waste water (mm)	flow limiter in inlet	Weight (kg)
3693102500	0.15	75	70	55.00

### Accessories

- PRO WaterManager, without LPWAN, figure 111 01 002
- Container cleaning set for FK-5 and FK-5 PRO, figure 369 02
- Rack for FK-5 and FK-5 PRO, figure 369 03
- Overflow monitoring for FK-5 and FK-5 PRO, figure 369 04
- Y-strainer, figure 602 00
- Connection set for FK-5 PRO, figure 369 57 001

### Spare parts

- Solenoid valve for FK-5 and FK-5 PRO, figure 369 13 001
- Actuator for FK-5 and FK-5 PRO, figure 369 16 001
- Cover for FK-5 PRO, figure 369 52 001
- Controller for FK-5 PRO, figure 369 53 001
- VAV DN25 for FK-5 PRO, figure 369 54 025
- Pressure sensor for FK-5 PRO, figure 369 55 001
- Pump for FK-5 PRO, figure 369 56 001