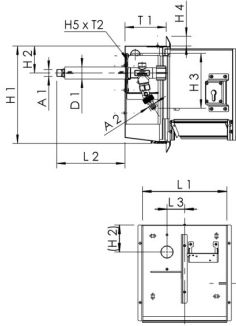




Product Features

- configuration:
 - frost-proof outdoor valve
 - socket 230 V
- wetted metal parts made of dezincification-free and corrosion-resistant gunmetal (in closed position), resistant against aggressive water
- lockable, stainless steel, polished surface
- as supply unit to the central power and water supply
- with SCHUKO surface-mounted socket
- frame with door with profile cylinder lock as a key lock including bit keys
- retrofittable and interchangeable on an existing locking system
- can be converted on site to CH-KABA lock design
- door with integrated flap version for hose or cable connection for security even during operation
- maintenance-free EPDM spindle seal
- cone with internal CV spring
- can be extended to any length at construction site
- with aerator for automatic drainage
- integrated CV and tube aerator as a security combination HD
- male pipe thread
- actuating grip with blue identification plate
- free from dead spots
- incl. hose coupling for common connection systems
- lock with uniform key number on request, other configurations on request



Standards and Approvals

- valve with DVGW approval
- Valve with ÖVGW approval
- valve with SVGW approval
- Valve with KIWA approval
- Valve with BELGAQUA approval
- according to accepted materials list from German environmental agency
- soundproofing certification according to DIN EN ISO 3822 Class 1
- DIN EN 15096 family H, type B / EN 1717 / DIN EN 13959

Technical data

- pressure rating PN 16
- protection class IP44

Part no.	DN	A1	A2	D1 (mm)	H1 (mm)	H2 (mm)	H3 (mm)	H4 (mm)	H5 (mm)	L1 (mm)	L2 (mm)	L3 (mm)	T1 (mm)	T2 (mm)	flow at 0.05 MPa (l/s)	flow at 0.1 MPa (l/s)
2110201500	15	R 1/2	G 3/4	35	283.5	78.5	160	28	114	245	198	51.3	121.5	56	0.4	0.67

Part no.	flow at 0.15 MPa (l/s)	Weight (kg)
2110201500	0.8	8.88

Spare parts

- operating cap, figure 590 03 001
- TRESOR lock cylinder case, figure 210 98 001
- TRESOR lock, figure 210 99 002
- TRESOR lock with uniform key number, figure 210 99 003
- hose coupling for Wall-Cabinets TRESOR, figure G3101 210 07