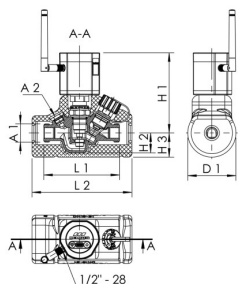


Product Features

- Automatic circulation balancing valve for hydraulic balancing of riser and floor distribution pipes
- For thermoelectronic self-regulating, hydraulic balancing and communication via wireless actuator as wireless control module
- With independent energy generation through energy harvesting
- Communication of the actuator (wireless control module) via radio (LPWAN) with included radio antenna
- Actuator with integrated LED status display
- USB-C port for alternative external power supply
- In combination with the KEMPER PRO WaterManager, Figure 111 01 001: Fully adjustable control range (30–70°C), recording of system temperatures, analysis of operation, and support for thermal disinfection
- wetted metal parts made from dezincification-free and corrosion-resistant gunmetal, resistant against aggressive water
- isolating unit with temperature sensor pocket
- PTFE seat gasket
- Electronic control unit
- male union thread
- with threaded plug
- free from dead spots
- with shut-off function
- incl. insulation shell made of closed-cell foamed polyethylene
- Available from 2nd quarter 2026



Technical data

- pressure rating PN 16
- max. operating temperature 90 °C

Part no.	DN	A1	A2	D1 (mm)	H1 (mm)	H2 (mm)	H3 (mm)	L1 (mm)	L2 (mm)	Weight (kg)
1440G01500	15	G 3/4	G 1/4	70	116.5	28.5	35	110	145	0.87

Accessories

- gunmetal solder union connector, figure 476 04
- drain valve made of gunmetal/plastic, figure J7109 173 00
- gunmetal sampling valve, figure 187 00
- gunmetal union connector, union nut, figure 476 06
- gunmetal union connector, union nut, FPT, with drain valve, figure 476 07
- PRO WaterManager, with LPWAN, figure 111 01 001
- gunmetal union connector, union nut, MPT, figure 476 08
- solder / pressfit union connector, figure 476 14
- pressfit union connector, MAPRESS stainless steel and copper, figure 476 22
- pressfit union connector, SANPRESS and PROFIPRESS, figure 476 30
- pressfit union connector, SANHA and NiroSan, figure 476 35
- pressfit union connector, MEPLA, figure 476 40
- pressfit union connector, MAPRESS stainless steel, figure 476 20
- pressfit union connector, SANPRESS INOX, figure 476 70
- adaptor, double union nut, figure 101 06

Spare parts

- insulation shell for MULTI-THERM valves, figure 471 11
- Wireless control module PRO, figure 144 01 000
- Wireless control bonnet PRO, figure 144 02 001
- Cap for MULTI-THERM shut-off unit, figure Z0100 140 00 001
- threaded plug , figure J8101 173 00