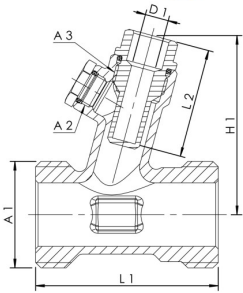


### Product Features

- wetted metal parts made from dezincification-free and corrosion-resistant gunmetal, resistant against aggressive water
- plugged port for optional installation of a drain- or sampling valve
- 9mm immersion sleeve for thermometer or Pt1000
- G 1/4 for assembly of a sampling valve or a drain valve
- full bore
- male union thread
- free from dead spots
- for any installation position



### Technical data

- pressure rating PN 16
- max. operating temperature 90 °C

Part no.	DN	A1	A2	A3	D1 (mm)	H1 (mm)	L1 (mm)	L2 (mm)	Weight (kg)
1280G01500	15	G 3/4	G 1/4	G 1/2	9	65	65	43	0.29
1280G02000	20	G 1	G 1/4	G 1/2	9	69	67	43	0.35
1280G02500	25	G 1 1/4	G 1/4	G 1/2	9	71	72	43	0.49
1280G03200	32	G 1 1/2	G 1/4	G 1/2	9	73	77	43	0.55
1280G04000	40	G 1 3/4	G 1/4	G 1/2	9	80	82	43	0.63
1280G05000	50	G 2 3/8	G 1/4	G 1/2	9	89	90	43	1.00

### Accessories

- gunmetal solder union connector, figure 476 04
- gunmetal sampling valve, figure 187 00
- Pt 1000 temperature sensor, figure T5100 140 00
- drain valve made of gunmetal/plastic, figure J7109 173 00
- dial thermometer, figure T5100 150 00
- gunmetal union connector, union nut, figure 476 06
- gunmetal union connector, union nut, FPT, with drain valve, figure 476 07
- gunmetal union connector, union nut, MPT, figure 476 08
- solder / pressfit union connector, figure 476 14
- insulation shell for MULTI T-PIECE, figure 471 28
- pressfit union connector, MAPRESS stainless steel and copper, figure 476 22
- pressfit union connector, SANPRESS and PROFIPRESS, figure 476 30
- pressfit union connector, SANHA and NiroSan, figure 476 35
- pressfit union connector, MEPLA, figure 476 40
- pressfit union connector, MAPRESS stainless steel, figure 476 20
- pressfit union connector, SANPRESS INOX, figure 476 70
- adaptor, double union nut, figure 101 06

### Spare parts

- threaded plug , figure J8101 173 00