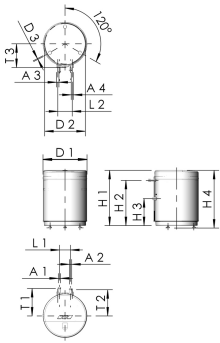




Product Features

- as flow-through drinking water cooler for cooling drinking water with integrated circulation pump
- for cooling and distributing the cold water as far as the tapping point outlet in the drinking water installation
- adjustment range of PWC temperature 15 °C to 25 °C
- consisting of PWM-controlled circulation pump with stainless steel housing and integrated check valve
- consisting of PWM-controlled operating fluid pump
- with diffusion-tight insulation fitted at the factory
- space requirements less than 1 m²
- wetted metal parts made from dezincification-free and corrosion-resistant gunmetal, resistant to aggressive water, stainless steel and drinking water-approved plastics
- low-noise operation
- installation on the ground
- incl. drinking water-side maintenance cut-offs
- built-in operating fluid buffer tank
- allows efficient operation of the cold water generator
- connection to cold water generator hydraulically separated, integration of all cold water generators possible
- compact design
- plate heat exchanger made of stainless steel grade 1.4401/1.4404
- electronic control unit for high control quality during operation
- incl. Pt1000 measuring element
- factory pre-assembled electrical connection of actuators and sensors to the control unit
- Contact for recharging request
- Fault signalling contact
- Data logger and gateway for connection to the building management system
- stores all evaluable parameters and serves as an interface device for the BMS/GA via Modbus TCP/IP
- Data storage on supplied micro SD card
- Readable and writable data points are made available via Ethernet using the Modbus TCP/IP protocol
- Lifetime storage capacity thanks to large 4GB SD card
- LAN RJ45 10/100 MBit/s Ethernet
- maintenance and commissioning of the plant on request, replaces version 610 01 000



Standards and Approvals

- plastic parts with KTW and W 270 approval
- according to accepted materials list from German environmental agency
- ÜA-Reg.-Nr. R-15.2.3-21-17048, WIEN-ZERT

Technical data

- pressure stage PN 10 drinking water side and PN 6 equipment side
- min. ambient temperature 0 °C
- max. ambient temperature 50 °C
- max. cooling capacity 6.4 kW
- power supply 230 V AC
- electrical power input 185.5 W

Part no.	max. flow rate of cold water circulation pump (m ³ /h)	max. head of cold water circulation pump (m)	volume of equipment (l)	capacity (KW)	A1	A2	A3	A4	D1 (mm)	D2 (mm)	D3 (mm)	H1 (mm)	H2 (mm)	H3 (mm)
6100100200	2	10	100	6.4	G 1	G 1	Rp 1	Rp 1	640	590	13	805	660	392.5

Part no.	H4 (mm)	L1 (mm)	L2 (mm)	T1 (mm)	T2 (mm)	T3 (mm)	kg
6100100200	840	161	210	400	381	345	70.00

Accessories

- KHS CoolFlow Chiller, figure 618 01

Spare parts

- Data logger and gateway for KHS Cold Water Cooler, figure 611 00
- cooling pump for KHS CoolFlow cold water cooler, figure 612 01
- Cold water circulation pump for KHS CoolFlow cold water cooler, figure 612 02 001
- controller for KHS CoolFlow cold water cooler, figure 612 03
- plate heat exchanger for KHS cold water cooler, figure 612 04
- Skymantle wrapping for KHS CoolFlow cold water cooler, figure 612 07
- top cover for KHS CoolFlow cold water cooler, figure 612 08
- Cold water circulation pump for KHS CoolFlow cold water cooler, figure 612 02 002